

Fly HCFE News Bulletin

Summer 2020 Edition

Welcome to your HCFE Travel, Tourism and Aviation's newsletter. We are Sara, Katherine, Nicola and Clair, and together we look forward to welcoming you to the start of your travel, tourism and aviation adventure.

Sara has extensive experience working within the industry. She worked in the industry for 17 years with both TUI and Co-op Travelcare, with 12 of those years as branch manager at Billingham and Stockton. Sara has taught travel, tourism and aviation here at HCFE since 2004 and brings a wealth of knowledge to the courses and is passionate about travelling to new and different countries, her favourite destination is Sri Lanka.

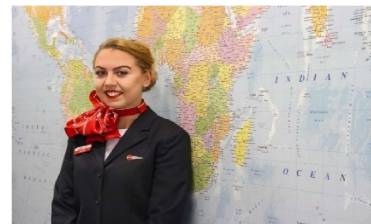
Katherine worked in the Hospitality and Tourism Industry for 20 years before becoming a lecturer. Her work portfolio includes companies such as Swallow Hotels and Virgin, where she was able to travel to destinations all over the world to work on developing those Hotels. Katherine has also worked seasonally in London, The Lake District, Greece, South of France and Austria. Katherine has enjoyed teaching for the last 16 years at HCFE and loves sharing all her experiences with our students.

Nicola worked for TUI travel for over 12 years and was branch manager in Washington and here in Hartlepool. Since leaving the industry Nicola has worked in several FE Colleges teaching Travel, Tourism and Aviation but has worked at HCFE for the last 4 years. Nicola is passionate about travel, especially aviation and has kept up to date with the industry with cabin crew training at British Airways (London Heathrow) and as an Air passenger agent in Newcastle airport for Serviceair. Nicola's favourite holiday destination is the Maldives where she has been several times but next on her to do list is to go to Brazil in South America.

Many moons ago Clair was a student herself here at HCFE. Since then she has banked 10

years of experience working within the retail side of the industry. Since 2004 Clair has taught travel, tourism and aviation to many students across the North East of England at various colleges and returned to HCFE as a lecturer in October 2019. Clair has a passion for everything travel, tourism and aviation and hopes to inspire you, as you begin your journey in this exciting industry.

As tutors were the perfect combination to guide and support you



through the first steps of your career in the industry. Our main aim is to ensure your time here at HCFE is an exciting one and that you successfully complete your qualification. We give you 110% and always strive to support you in your studies to enable you to achieve the highest grades obtainable.

During your time on the course you will have the opportunity to take part in various trips which in the past have included but not limited to Whitby, York, Edinburgh, London – British Airways Training Academy, Barcelona, Paris and New York. We have fantastic industry links and you will often have guest speakers from the industry to enhance your learning experience, these include Jet2, Newcastle International Airport, Teesside International Airport, TUI and British Airways.

We look forward to seeing you in September on one of our exciting courses:

- BTEC L1 Diploma in Travel and Tourism
- BTEC L2 First Extended Certificate in Travel and Tourism
- NCFE L3 Extended Diploma in Travel and Tourism
- FDA in Travel and Tourism
- NCFE L2 Cabin Crew

Wings Graduation Ceremony

Upon the completion of your studies you will be invited to our end of year celebration 'Wings Graduation Ceremony'. During the evening we celebrate and award your fantastic achievements in the company of dignitaries, staff, students, family and friends.



One of the first trips we take you on is an induction visit to Whitby. Whitby is a seaside town in Yorkshire, northern England, split by the River Esk. On the East Cliff, overlooking the North Sea, the ruined Gothic Whitby Abbey was Bram Stoker's inspiration for "Dracula". Nearby is the Church of St. Mary.

Task: You are arranging an information pack for two different types of visitor to Whitby. For your first activity you are required to carry out the following research:

You must use all resources available to you including the internet and where possible visit the tourist information centre and collect as much information including leaflets and ask the staff to answer the information that you need.

1. What are the transport options for travelling to Whitby and prices from Hartlepool for a day trip?
2. Using the examples, give a description of visitor attraction in Whitby. (National Trust/English Heritage properties, theme parks, museums, historical sites, heritage sites, and wildlife parks).
3. Using the examples, give a description of some natural features in Whitby? (mountains, beaches, lakes, rivers, coasts).
4. Using the examples give a description of different types of accommodation found in Whitby. (hotels, guesthouses, bed and breakfasts, self-catering, camping and caravanning, holiday parks).
5. Give examples and descriptions of places to eat out in Whitby. (location, type of food outlet, menu examples).
6. Give examples and a full description of facilities in Whitby (sport and leisure, shopping, restaurants).
7. Give examples and a full description of attractions that offer Arts and Entertainment in Whitby. (theatres, art galleries, exhibitions, local festival/events).
8. Explain what is the appeal for families to Whitby, giving examples of what they could do?
9. Explain what the appeal for couples to visit Whitby is, giving examples of what they could do?



My Dream Career . . .

There are many industries in the travel, tourism and aviation sector, providing a wide range of different employment and career opportunities. The travel and tourism sector is one of the largest and fastest growing in the world, therefore constantly changing and consisting of many companies and associated job roles.

In order to do well in the highly competitive and attractive travel and tourism industry and secure one of the exciting job roles it has to offer, your knowledgeable tutors will guide you and help you to obtain the skills required to secure one of those roles, during your time on your course.

Do you dream of flying high as cabin crew for the likes of Emirates or Virgin Atlantic or do you see yourself as a traveller, visiting exciting new destinations to complete holiday contracts for your tour operating employer?

What attracts you to this vibrant, exciting industry? What are your career aspirations?

Whatever your dream job maybe we want to hear about it.



Complete all tasks within this bulletin and bring them with you to your first day of induction.

My Dream

Holiday Destination . . .

The travel, tourism and aviation industry is exciting and with most careers you can travel to all corners of the globe.

We all have 'bucket lists' of those destinations we hope and dream to visit and discover.

In no more than 500 words, tell us about your dream holiday destination.



Important Information

UNIFORM STANDARDS

As part of your travel, tourism and aviation course you will be expected to wear a uniform. We appreciate that everyone is an individual with their own style, so we do not require you to purchase a full uniform from ourselves only the shirt or blouse and scarf or tie so that we are uniformed as Travel, Tourism and Aviation.

Please ensure that you follow the guidelines as detailed.

Uniform*

- Navy skirt or trousers
- Black or navy shoes – smart shoes no sandals or trainers
- A college issue blouse or shirt
- A college issue tie/scarf
- ID Badge with HCFE Lanyard
- Navy cardigan or blazer/jacket – this is optional

Personal presentation

- Neat hair – tied back where possible
- Appropriate natural make up and /nail varnish

*The college may offer financial support for the purchase of uniforms – this can be arranged at induction.

To do before the start of the course!

- ✓ Complete all tasks found within this bulletin
- ✓ Buy Stationary

WHAT'S NEXT?

Insert details about GCSE results day.

To complete the enrolment, you will need to bring in your GCSE Results on 20th August 2020.

You will also need to bring in your passport or birth certificate as a form of ID.

If you have any queries please contact a member of the travel, tourism and aviation team.

Sara.paterson@hartlepoolfe.ac.uk

Katherine.allen@hartlepoolfe.ac.uk

Nicola.bird@hartlepoolfe.ac.uk

Clair.bage@hartlepoolfe.ac.uk



Don't forget to tell anyone who might book you a holiday!



**Course starts week commencing
31st August 2020**

Key Dates Academic Year 2020-2021

Half Term Week	26.10.20*
Christmas Break	21.12.20 & 28.12.20
Half Term Week	15.02.21*
Easter Break	29.03.21 & 05.04.21
Half Term Week	31.05.21*

*should you have any outstanding work you may be required to attend college during these weeks.